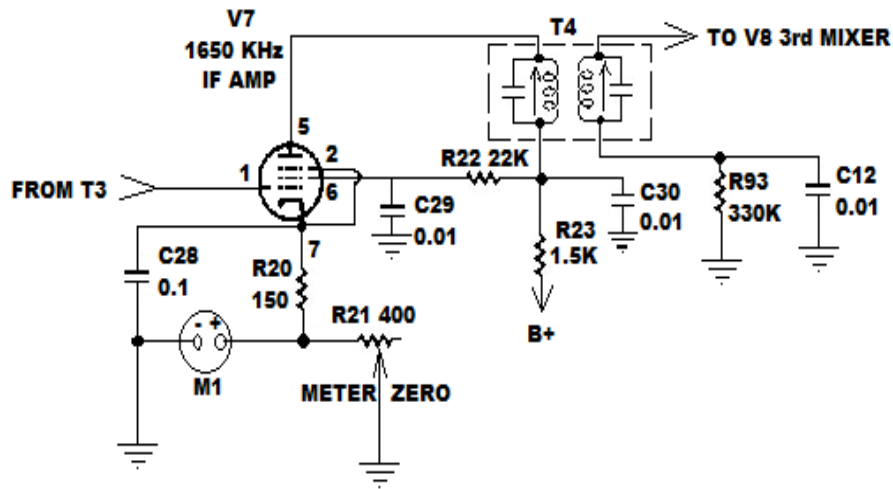


1650 IF AMP/ S-METER SCHEMATIC & VOLTAGE CHART

Static test, no signal in, RF GAIN and AF GAIN at minimum.



REF: B+=172V, SECONDARY B+=149V AND AUXILIARY B+=146V, Power supply voltages may vary +/- 10%. Voltages in the chart will vary accordingly.

MEASUREMENTS TAKEN WITH NO SIGNAL IN						
PIN 1	PIN 2	PIN 3	PIN 4	PIN 5	PIN 6	PIN 7
1.23	2.35	6.3vac	0	145	81.8	2.35

See section 7-6 for V7, 1650 IF voltage chart.